

# **B&NES Tree and Woodland Delivery Plan**

---

**Bath & North East  
Somerset Council**

---

**August 2022  
(Main Report)**

Ecology | Green Space | Community | GIS

Unit 1, Brassmill Lane Enterprise Centre | Bath | BA1 3JN

01225444114 | [info@ethosep.co.uk](mailto:info@ethosep.co.uk)

[www.ethosep.co.uk](http://www.ethosep.co.uk)



## **B&NES Tree and Woodland Delivery Plan Main Report**

<b>Contents</b>	<b>Page No.</b>
1.0 Introduction	3 - 4
2.0 Key objectives	5
3.0 The benefits of trees	5 - 6
4.0 Key tree planting targets and commitments	6 - 7
5.0 Existing trees in B&NES (the baseline)	8 - 12
6.0 Background evidence (appendices not included)	13
7.0 Action plans	14 - 25
8.0 Monitoring progress	26

## **1.0 Introduction**

### **1.1 Background and key drivers for the T&WDP**

Ethos Environmental Planning Ltd (Ethos) have been commissioned by Bath and North East Somerset (B&NES) Council to produce a Tree and Woodland Delivery Plan, which the Council are committed to preparing through the B&NES Local Plan (Tree Policy NE6) and the B&NES Green Infrastructure Strategy.

B&NES Council declared a Climate and Ecological Emergency in 2019 and set a target of carbon neutrality by 2030. Tree and woodland planting is seen as an important tool in addressing these emergencies.

On the 10th October 2019 B&NES Full Council accepted a motion to increase tree cover and develop a clear strategy for planting trees in B&NES. This was reflected in a press release 10th October 2019, Cabinet Member for Climate Emergency & Neighbourhoods, which stated B&NES commitment that ‘A detailed Tree and Woodland Plan will be produced showing where trees will deliver most benefit and how the planting and future management will be resourced in partnership with communities, volunteers and landowners’ and set an ‘early ambition of planting 100,000 trees, with partners and communities, by May 2023’.

The Council has also stated its aim is to support the West of England Nature Recovery Network (NRN) ambitions, published by the West of England Nature Partnership (WENP), to double woodland cover (ha) and urban tree canopy cover across the district by 2060. WENP, of which B&NES is a partner, launched ‘The Forest of Avon Plan, a West of England (WoE) Tree and Woodland Strategy’ in June 2021. It is intended that the B&NES Tree & Woodland Plan will sit alongside the Forest of Avon Plan and enable delivery which is responsive to the specific local characteristics and urban/rural mix.

This Tree and Woodland Delivery Plan (T&WDP) responds primarily to the Council’s declared Climate and Ecological Emergency, and the legacy of Covid 19, which has highlighted the need for resilient and healthy communities that have good access to green space.

The plan will therefore need to be delivering trees and woodlands which first and foremost deliver carbon capture and ecological enhancement. In addition, and where possible and appropriate, new planting will be planned to deliver multiple other GI benefits and nature-based solutions for people and the environment such as: reducing flood risk; reducing air pollution; providing sustainable timber resources (to name a few).

### **1.2 Scope of the T&WDP**

B&NES Council’s ambition is to plant 100,000 trees by 2023, and to contribute to the WENP NRN ambition of doubling semi natural tree and woodland cover by 2060. The delivery plan covers a period of 5 years and therefore should be reviewed and updated eight times over the 40-year period to 2060. It is intended to be a ‘live’ document, to be reviewed annually, setting out a detailed action plan each year.

## B&NES Tree and Woodland Delivery Plan – Main Report

Partnership working with the community, landowners and volunteers is essential to delivering the plan in both urban and rural areas, as the Council does not have sufficient resources, in particular land to deliver these targets on its own.

The Tree and Woodland Delivery Plan aims to enable those with an interest in planting trees in B&NES to get involved and empower them to plant the right trees, in the right places, and for the right reasons. The Council has identified the Forest of Avon Trust (FoA) as a key partner and will work with the FoA to continue to identify how planting and future management can best be resourced in partnership with communities, volunteers, and landowners.

Stakeholder consultation was undertaken by Ethos in June 2021 to develop the evidence base and inform the action plan.

### **1.3 Underpinning principles**

The underpinning principle for the Tree and Woodland Delivery plan is: the right tree, in the right place. Ensuring the right trees are planted in the right places will:

- Complement landscape character and protect important views.
- Ensure where possible that trees are not planted on land where soils already store carbon efficiently and effectively.
- Avoid damage or loss of ecological habitats and species and heritage features.
- Avoid loss of the most productive agricultural land and soils.
- Contribute to the tree & woodland aspirations of the WENP Nature Recovery Network and Forest of Avon Plan.
- Ensure that the aspiration to double canopy cover by 2060 in the WoE uses this principle to ensure the most appropriate distribution of tree canopy increase across the whole WoE area.

### **1.4 Structure of the Tree and Woodland Delivery Plan (T&WDP)**

Ethos were commissioned to carry out a number of pieces of research and desktop analysis to help inform this main report and action plan (see Section 7 for the action plan) and the delivery of the key objectives (Section 2). The research and desktop analysis (i.e., the evidence base) is presented as a series of appendices (summarised in Section 6). In addition, there is also a separate report which sets out the communications and engagement strategy for the T&WDP.

The T&WDP consists of the following parts:

- Main report and action plan (this report);
- Communication and engagement strategy; and
- A series of supporting appendices, which form the evidence base for the action plan.

## 2.0 Key objectives

The key objectives of the T&WDP are to:





1. Plant 100,000 trees by Spring 2023 and investigate feasibility and implications of B&NES contributing to the FoA plan and WENP targets of doubling tree and woodland cover overall in the West of England by 2050-2060.
2. Contribute to FoA Plan targets and priority actions.
3. Ensure planting where it will deliver the principles of the right trees, in the right places for the right reasons.
4. Resource the delivery of plan outcomes both by B&NES Council and in partnership.
5. Raise awareness and support for tree planting within B&NES.

## 3.0 The benefits of trees


The Forest of Avon (FoA) Plan states that trees are nature's 'do it all' and provide a huge range of interrelated benefits (ecosystem services) that contribute to all aspects of our quality of life, including:

- Improving our mental health and wellbeing
- Providing habitat and food for wildlife, thereby helping to tackle the ecological emergency
- Producing timber and other wood products with a low carbon footprint
- Providing sustainable employment and recreational opportunities
- Sequestering (when growing) and storing carbon, thereby mitigating climate change
- Improving water quality
- Reducing flood risk
- Providing shade and cooling to combat hotter summers
- Reducing soil erosion
- Shading and protecting stock from the elements
- Adding to the beauty and aesthetic of landscapes
- Producing fruit and nut crops
- Reducing air pollution

The FoA Plan also highlights the following figures around the benefits provided by trees and woodlands:

	Provisional figures from the Environment Agency's Natural Capital Tool estimate that woodland in the West of England is worth <b>£717 million</b> in carbon sequestration, air quality improvements and hazard regulation alone.
	Summer cooling of businesses by trees and greenspace is worth at least <b>£3.63 million</b> annually in the West of England. <sup>1</sup>
	Energy use can be 10% lower in buildings sheltered by trees.
	Green environments increase businesses' patronage by 30- 50% and willingness to spend by 10-50%. <sup>2</sup>

The **Pollution Removal by Vegetation tool** created by the UK Centre for Ecology & Hydrology (UKCEH) and Economics for the environment consultancy (eftec) calculates, per local authority, how much pollution would be removed by planting trees as well as corresponding public health cost savings. For B&NES, the following is estimated:

	For B&NES, each additional hectare of woodland planted is estimated to remove <b>7.5kg of PM2.5 annually</b> , with a <b>health benefit value of £17,123</b> . <sup>3</sup>
---	---

## 4.0 Key tree planting targets and commitments

- **B&NES Council's ambition is to plant 100,000 trees by Spring 2023** - This is equivalent to planting around 45ha<sup>4</sup> of new woodland using very small trees (known as transplants). Tree planting will, however, be made up of a combination of new woodland, alongside larger trees (known as standards) in parks, open spaces and streets, as well orchards, and field and hedgerow trees. **As of Summer 2022, around 64,000 trees have been planted by B&NES and by participating partners.**
- **Support the WENP Nature Recovery Network (NRN) target of doubling woodland cover and urban tree cover in the West of England by 2060, and the Forest of Avon (FoA) Plan target of doubling semi-natural tree cover in the Forest of Avon area by 2050** - For the whole of the West of England FoA Plan Area, this means an extra

<sup>1</sup> Economics for the Environment Consultancy (EFTEC) and others, Scoping UK Urban Natural Capital Account, June 2018, p.4.

<sup>2</sup> Literature Review, Greater Manchester Combined Authority:

<https://www.youtube.com/watch?v=u8RzZ3kdwUs>

<sup>3</sup> <https://shiny-apps.ceh.ac.uk/pollutionremoval/>

<sup>4</sup> Calculated by 100,000 trees/2250 (trees per ha) = 45ha although this depends on the planting densities.

8,000ha of tree and woodland cover. It does not mean that these extra trees and woodland will be evenly distributed across the whole plan area (due to right tree, right place, right reason principle).

Existing woodland canopy cover in B&NES (woodland over 0.5Ha) is 2,892ha (equivalent to a percentage cover of 8.25%). However, overall tree and woodland canopy cover for all trees and woodlands, urban and rural, is a much higher figure of 5,937ha (16.54%)<sup>5</sup>. This highlights the added contribution of urban trees in parks, open spaces, and streets as well as individual and small groups of trees in the rural landscape. Further information on existing tree cover in B&NES in comparison with the West of England and England is provided in Section 5 below.

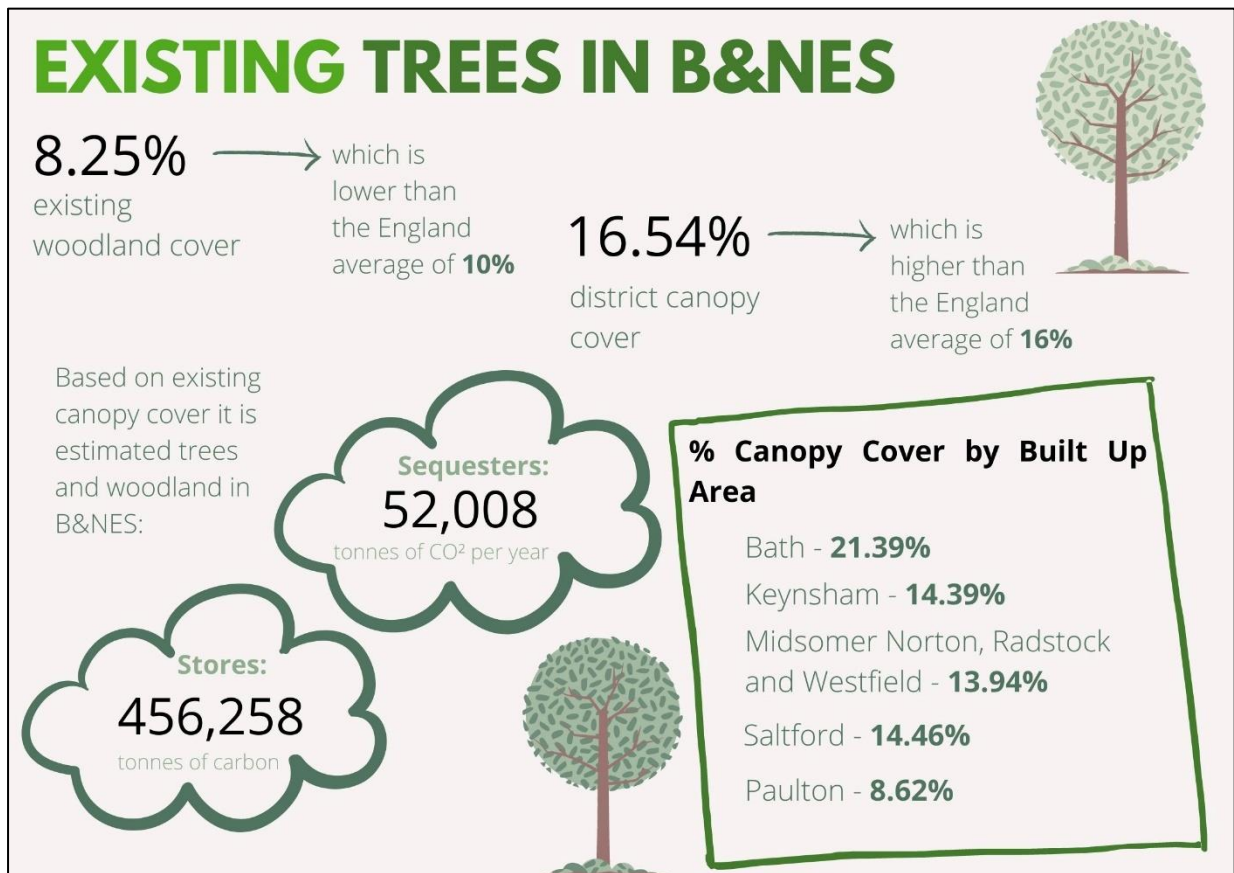
If tree and woodland canopy cover were to be doubled in B&NES, this would result in trees and woodlands covering over 30% of the landscape. The principle of right tree, right place, for the right reason, means that some areas will be better suited to planting more trees than others, and some areas will not be suitable for tree planting. It is therefore not necessarily the case that tree and woodland cover can be doubled in B&NES specifically and this point requires further consideration and discussion with B&NES partners in the West of England, WENP and the FoA.

- **Right Tree, Planting in the Right Place for the Right Reasons** – B&NES will focus on finding the right places for tree planting through:
  1. Using the Woodland Opportunity Map for rural B&NES alongside the tree and woodland sensitivity assessment and guidance. The map and guidance will be publicly available as a resource to help locate landscape areas within B&NES best suited to planting different sized categories of woodland from small groups to large scale woodlands. The mapping takes into account a range of known constraints to reveal optimal general landscape areas for planting. It includes links to planting guidance for each landscape type/character area.
  2. Reviewing and updating tree and woodland policy in the new Local Plan in line with ever changing national government requirements, continue to protect our existing tree stock, and to optimise tree planting in new development which is of the right species and located in the right places within developments.
  3. Carefully designed planting projects on Council-owned land and streets in urban areas which takes account of constraints and includes consultation.

---

<sup>5</sup> Measured from the 2020 Aerial Photography of Great Britain (APGB) mapping.

## 5.0 Existing trees in B&NES (the baseline in 2020)



### 5.1 Woodland

The FoA Plan includes figures for the existing percentage woodland (minimum size 0.5ha) cover across the four local authorities within the West of England, as shown in Figure 1 below. The current level of woodland provision varies across each Local Authority Area and this is likely to be the result of a combination of factors including topography, landscape, soil type and land management. As can be seen, at 8.25% (2,892ha) B&NES is above the percentage cover across the West of England (8%) and below the figure for England, which is 10%<sup>6</sup>.

<sup>6</sup> Office For National Statistics 2020 (referenced in FoA Plan).



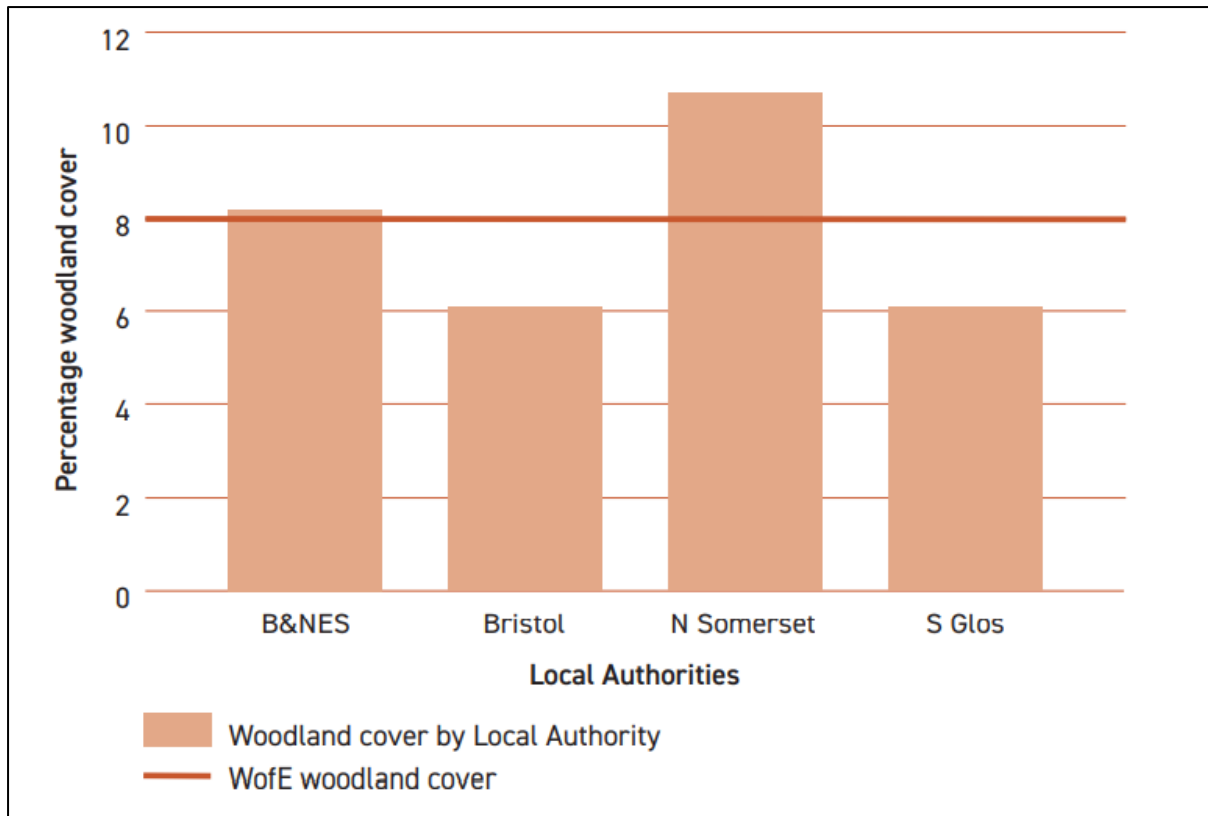


Figure 1 Percentage woodland cover by West of England Local Authority (extracted from the FoA Plan)

## 5.2 Canopy cover (woodland and trees)

For this plan, Aerial Photography for Great Britain (APGB) has been utilised as the recommended approach (see Appendix 3) to measure the overall canopy cover of woodland and trees within B&NES.

### 5.2.1 District

This estimates an overall canopy cover of 16.54% (5,937ha) for B&NES District, and is shown in Figure 2 below. This is in line with the England average, which is estimated at 16%<sup>7</sup>.

<sup>7</sup> <https://www.forestresearch.gov.uk/tools-and-resources/fthr/tree-canopy-cover-leaflet/>

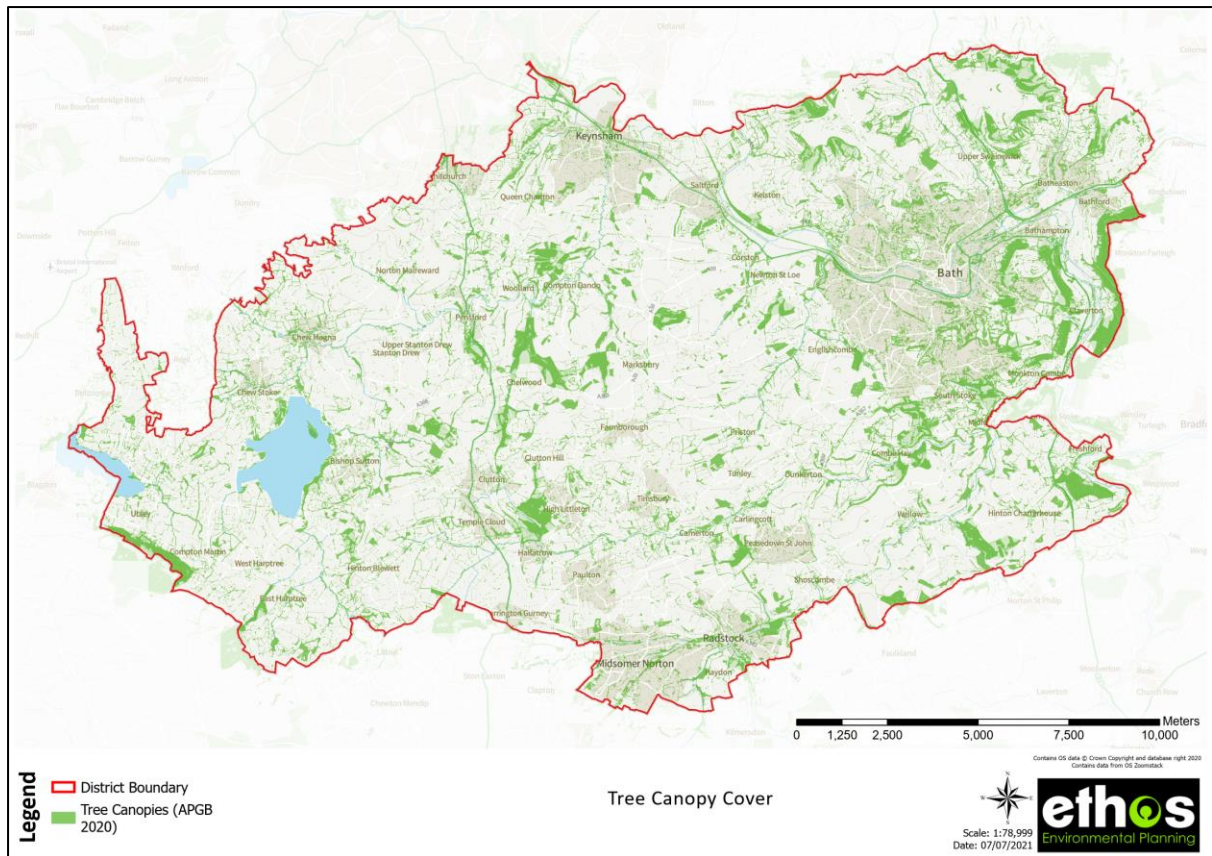


Figure 2 Tree canopy cover in B&NES (from APGB in 2020)

### 5.2.2 Ward

The canopy cover % breakdown by ward (using APGB from 2020) is shown in Figure 3 below. The figure highlights those wards which fall below 20% tree cover, which Forest Research recommend as minimum standard for tree cover.

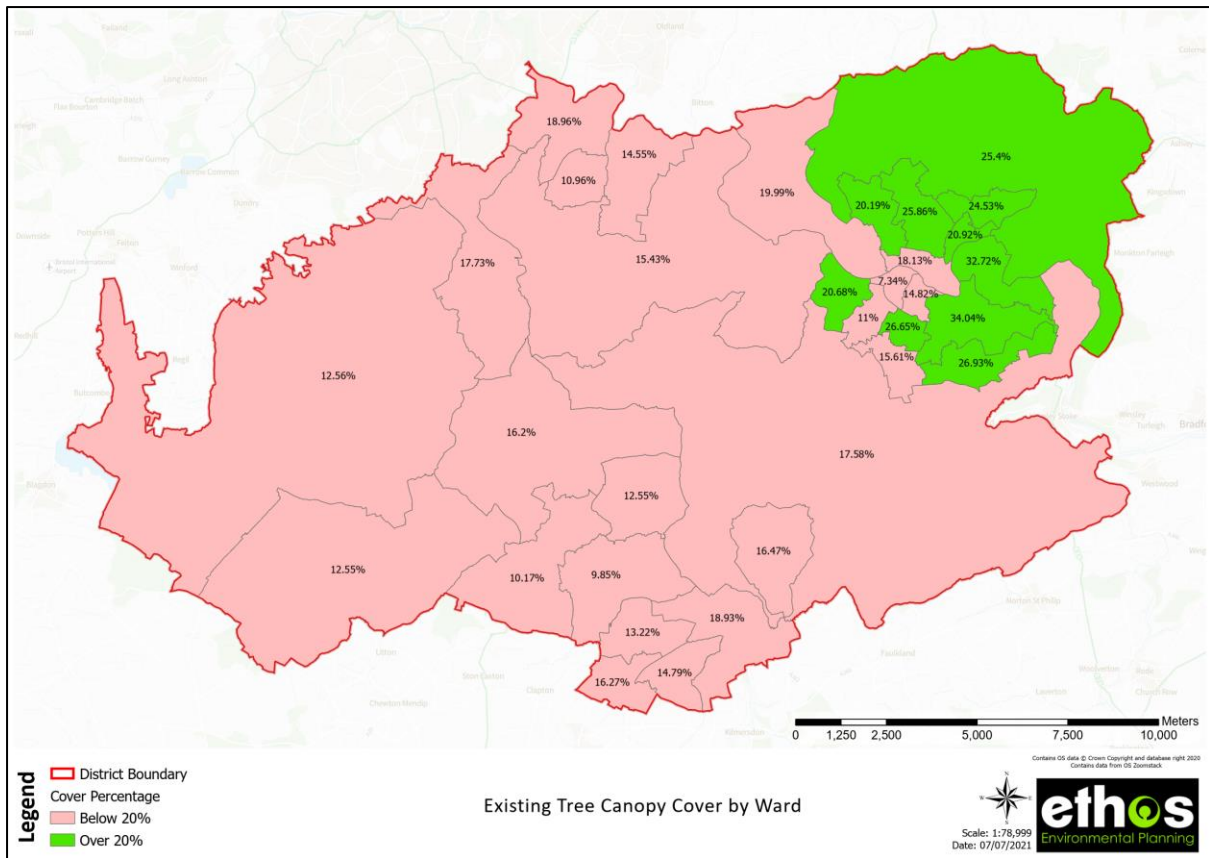


Figure 3 Percentage canopy cover by ward (from APGB in 2020)

### 5.2.3 Key settlements/urban areas

The breakdown in tree canopy cover (using APGB in 2020) for the key settlements within B&NES is also shown in Table 1 below. The boundaries for these areas were derived using the latest building footprints from OS Mastermap in addition to urban parks and gardens, and are shown in Figure 4 below.

As can be seen, the canopy cover with the City of Bath is good, and is in line with the Forest Research recommended minimum target (20%). The average tree cover for towns in the South West is estimated at 11.1%<sup>8</sup>.

Table 1 Canopy cover by key settlement/urban areas (using APGB in 2020)

Settlement	% Canopy Cover (using APGB)
1. Bath	21.39
2. Keynsham	14.39
3. Midsomer Norton/Radstock/Westfield	13.98
4. Saltford	14.46
5. Paulton	8.62

<sup>8</sup> Trees in Towns II: A new survey of urban trees in England and their condition and management, 2008.

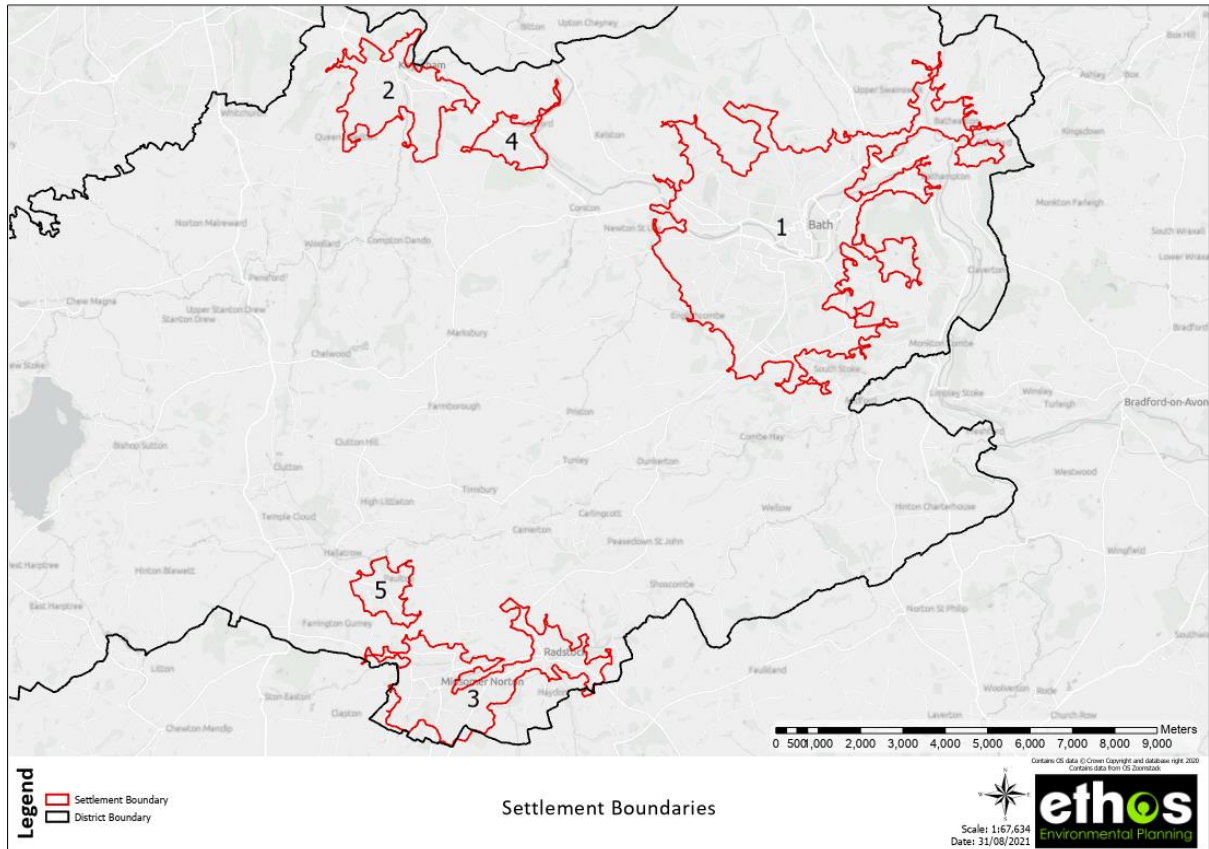


Figure 4 Key settlement/urban area boundaries used for calculating % canopy cover (using APGB 2020)

### 5.3 Carbon Capture and Storage Calculations (2020)

Based on a canopy cover of 16.54% (5,937 hectares), using APGB 2020 data inputted into i-Tree Canopy software, it is estimated that trees and woodland in B&NES:

- **Sequesters (captures) 52,008 tonnes** of CO<sup>2</sup> per year.
- **Stores 456,258 tonnes** of carbon (as at 2020).

## 6.0 Background Evidence (Appendices not Included)

Table 2 below provides a summary of the background evidence that have been produced to respond to the objectives (Section 2) and develop the action plans (Section 7). As these appendices are large file size, they haven't been included in the pdf of the Plan. They are however, available on request.

*Table 2 Summary of Appendices*

<b>Appendix (number and title)</b>	<b>What it covers</b>
1. National and Regional Policy Context	Sets out the key national and regional policy and strategy documents of relevance to the Tree and Woodland Delivery Plan.
2. Health and Wellbeing Context	Highlights the importance of trees for health and wellbeing and sets out some of the key strategies, initiatives and data related to health and wellbeing in B&NES.
3. Baseline and Monitoring	Sets out the existing tree and canopy cover in B&NES and the varying approaches to monitor changes in tree canopy cover and tree numbers (and associated ecosystem services). Recommended approaches are provided for monitoring canopy cover (and associated ecosystem services/benefits) and tree planting, including developing a 'virtual forest' web map and tree sponsorship web map. It also sets out the framework for monitoring plans.
4. Urban Area – Audit of Council Land for Tree Planting	Sets out the methodology for the assessment of council owned land to identify which sites have potential for planting and where the opportunities are.
5. Urban Area – Audit of Streets for Tree Planting	Sets out the methodology used to audit streets for tree planting, with maps identifying possible locations for planting by ward. Also sets out the key considerations for any street tree planting scheme.
6. Urban Area – Existing and Future Tree Projects	Provides a summary of existing B&NES Council tree planting projects as of August 2021, as well as existing and future urban tree projects identified through stakeholder consultation in June 2021.
7. Rural Area Tree Planting	Sets out guidelines for Council involvement in rural tree planting initiatives and existing and future projects and partnerships identified through stakeholder consultation in June 2021.
8. Issues and Opportunities for Tree Planting Initiatives	Outlines the issues and opportunities in relation to the supply of trees for planting initiatives, identified through stakeholder consultation (which included a number regional and local nurseries), and through research. It also covers the benefits and challenges of allowing natural regeneration as an option for increasing tree cover and considers sustainable tree guards and mulches.
9. Funding and Delivery Mechanisms for Tree Planting and Establishment	Sets out the key tree and woodland funding and delivery mechanisms for tree planting and establishment in B&NES. flow chart shows what funding schemes may be available/suitable for different planting projects.

## **7.0 Action Plans (2021 - 2026)**

### **7.1 Overview**

The T&WDP is a 'live' document, and will be reviewed annually, with a detailed action plan worked up for each year.

This section provides the detailed action plan for year 1 (Winter 2021 – Spring 2022), with an outline for the following 4 years.

The action plans are structured around the following areas of activity:

- Urban Tree Planting Delivery
- Rural Tree Planting Delivery
- Tree Supply/Community Tree Nurseries and Projects
- Engagement, Promotion and Delivering Right Tree, Right Place, for the Right Reasons.
- Strategic

The action plans includes information on the delivery lead, resources, contribution to the plan objectives, contribution to the FoA Plan and measures of success.

## 7.2 Detailed Action Plan for Winter 2021 - Spring 2022

Item	Action	Lead Officer and partners	Resources	FoA Plan Contribution	Measure of success (end of 03/22)	Outcome
<b>1 Urban Tree Planting Delivery</b>						
1a	Develop and deliver planting and establishment programmes on B&NES land. There are 12 agreed projects with 1 additional project requiring agreement (@ 2500 trees).	B&NES Technical Officer.	0.3 FTE  External Funding (approx. 32k) from Trees for Climate fund  Council land	5 Yr plan: 5.1 LCA actions: 11.1 f, g, h. 13.1 c, d, h	3391 trees planted (+ 2500 if final project agreed)	4927 trees planted
1b	Develop and deliver street tree planting and establishment programmes. There are 17 street projects funded @ 285 street trees.  *This includes 2 projects in AQMA's	B&NES Tree and Woodland Officer	0.6 FTE  External funding (approx. £100k from Trees for Climate fund)	5 Yr plan: 5.1 LCA actions: 11.1 f, g, h. 13.1 c, d, h	285 street trees planted	198 trees planted

## B&amp;NES Tree and Woodland Delivery Plan – Main Report

Item	Action	Lead Officer and partners	Resources	FoA Plan Contribution	Measure of success (end of 03/22)	Outcome
1c	Appraise Tree sponsorship scheme for streets and green spaces. If valid business case made proceed to procure (Interactive web map or Trees for Streets agreement)).	B&NES Tree and Woodland Officer	0.1 FTE	5 Yr plan: 3.1, 8.1, 8.2,	An interactive map populated with 200 trees for adoption	Not yet actioned
1d	Stimulate, Develop, and roll out External tree planting project - 1 Tree per Child	Tree Planting Project Officer Schools.	1 FTE  B&NES internal funding (approx. £11666 (yr 21-22) @ 28k p/a  External funding via project grants from the Tree Council/WT @ 4k (yr 21-22)  Additional external funding via Replant B&NES fund (approx. £8,000 estimated)	5 Yr Plan: 1.2, 3.1, 5.4, 8.2 LCA actions: 13.1g	No. of children engaged, and trees planted – 2000 estimated	Tree Planting Project Officer appointed summer 2022 – project to launch Autumn 2022



## B&amp;NES Tree and Woodland Delivery Plan – Main Report

Item	Action	Lead Officer and partners	Resources	FoA Plan Contribution	Measure of success (end of 03/22)	Outcome
1e	Assist roll out of External tree planting project - Queens Green Canopy	B&NES Tree & Woodland Officer + appointment of Tree Planting Programme Office.	0.1 FTE resource above	5 Yr Plan: 1.2, 3.1, 5.4, 8.2 LCA actions: 13.1g	100 school trees (estimate)	56 trees planted for the Queen's Green Canopy at schools
1f	Stimulate External tree planting projects - Curo	Curo tree officer with assistance from B&NES Tree & Woodland Officer	B&NES officer time	5 Yr plan: 2.5,	200 trees (estimate)	134 trees planted
1g	Tree Giveaway	B&NES Tree & Woodland Officer	0.2 FTE B&NES Tree and Woodland Officer time + Development Manager  B&NES internal funding (approx. £20000)	5 Yr plan: 1.2, 3.1, 5.4	10000 trees	3537 trees to members of the public through three 'Tree Giveaway's between October and April
<b>2 Rural Tree and Woodland Planting Delivery</b>						
2a	Develop and deliver planting and establishment programme on rural Council owned land. (Currently B&NES rural land is not immediately available to plant as it is held for specific purposes that may not be deliverable).	B&NES Tree & Woodland Officer,	Corporate assistance required to review land allocations. Explore corporate willingness to purchase land if necessary  Officer time	5 Yr plan: 7.1, 7.2	Land identified  Land purchased	Ongoing

B&NES Tree and Woodland Delivery Plan – Main Report

Item	Action	Lead Officer and partners	Resources	FoA Plan Contribution	Measure of success (end of 03/22)	Outcome
2b	Stimulate, develop and roll out External tree planting projects via a 'call for sites' with FoA	B&NES Tree & Woodland Officer & Planning Policy Team & FoA	Officer Time	5 Yr plan: 2.5, 7.1, 7.2,	Call for sites	Ongoing
2c	Working with FoA, identify Rural Tree Planting partnership projects where B&NES can assist with delivery (set up planting website, forums etc)	B&NES Tree & Woodland Officer, FoA	0.1 FTE	5 Yr plan: 2.5, 4.1, 5.1, 5.6 7.2	That a growing no. of external projects/partners are stimulated year on year	19k trees planted through Forest of Avon projects
2d	Working with FoA and Parish Councils, develop a Parish scheme such as Plant a Hectare Project	B&NES T&W Officer working with FoA	Officer time – plus O.5 FTR project officer post over 18months.	5 Yr plan: 2.5, 3.1, 4.1, 5.1, 5.6	Project designed, Parish expression of interest undertaken, costed, approved and officer appointed	Ongoing
2e	Conclude Woodland Opportunity Mapping exercise and embed into T&WDP.	B&NES Landscape Officer, Planning Policy Team	Officer time	5 Yr plan: 2.2	Mapping clearly identifies woodland potential  Woodland Opportunity Map is held on B&NES Planning Policy and B&NES tree planting websites for public reference	Webpage live at: <a href="#">Woodland Opportunity Mapping - StoryMap</a>

## B&amp;NES Tree and Woodland Delivery Plan – Main Report

Item	Action	Lead Officer and partners	Resources	FoA Plan Contribution	Measure of success (end of 03/22)	Outcome
<b>3 Tree Supply - actions in yr 22-23 [Refer to 7.3 with the next Action Plan]</b>						
<b>4 Engagement, Promotion and Delivering Right Tree, Right Place, for the Right Reasons</b>						
4a	Set up, administer, and promote a B&NES Virtual Forest Interactive Map (with FoA)	B&NES Officer time, other Council teams (GIS/ time, FoA, Consultancy time	Officer time  Financial costs from delivery plan	5 Yr plan: 6.2	Create interactive planting map  That mapping is promoted well, and it captures details of as many trees planted in B&NES as possible	Developed internally with IT Services for launch Autumn 2022
4b	Set up, administer and promote a Tree planting donation scheme (voluntary funding)	Tree and Woodland Officer/FoA	Existing Officer time	5 Yr plan: 8.1, 8.2	Creation of 'Replant B&NES' page	Not yet actioned
4c	Manage and promote the B&NES Woodland Opportunity Mapping and Guidance	Planning Policy Team, Landscape Officer, Tree & Woodland Officer, FoA.	Existing Officer time	5 Yr plan: 2.2	On-line mapping active and guidance available to the public	Ongoing
4d	Review and update tree and woodland related planning policy and guidance for new Local Plan	Planning Policy – Landscape Officer	Existing officer time	5 Yr plan: 2.2	Updated policies and evidence base completed for new Local Plan	Not yet actioned
4e	Investigate setting up and delivering a B&NES Rural Tree Planting Forum (with FoA).	Officer time	Existing officer time	5 Yr plan: 2.5, 4.1, 5.3, 5.6	That a growing no. of external projects/partners	Not yet actioned

## B&amp;NES Tree and Woodland Delivery Plan – Main Report

Item	Action	Lead Officer and partners	Resources	FoA Plan Contribution	Measure of success (end of 03/22)	Outcome
					are stimulated year on year	
4f	Use the communications and engagement strategy to engage both communities, and internally within B&NES.	B&NES Tree and Woodland Officer + others	0.2 FTE	5 Yr plan: 1.2	T&W website set up and active social media campaign in place and traffic monitored	Ongoing
<b>5 Contributing to relevant FoA Plan aspirations, liaison with FoA officers</b>						
5a	Formally adopt or endorse the Forest of Avon Plan: A Tree and Woodland Strategy for the West of England	B&NES	Existing officer time	5 Yr plan: 1.1	Formal adoption of the Forest of Avon Plan.	Not yet actioned
5b	Contribute to the FoA Plan as set out in its Action Plans for Local Authority input	B&NES Tree and woodland Officer, B&NES Landscape Officer (Planning Policy), others as required	Officer time on-going	5 Yr plan: 1.2, 2.2, 2.5, 3.1, 3.3, 3.5, 4.1, 6.1, 6.2, 6.3, 6.4, 7.1	Contributions to FoA plan – on-going includes referencing actions to FoA plan and attendance at WoE T&W Strategy Group Meetings	Ongoing

### 7.3 Outline Action Plan for Winter 2022 - Spring 2023

Item	Action	Lead	Resources	FoA Plan Contribution	Measure of success (end of 03/23)
<b>1 Urban Tree Planting Delivery</b>					
1a	Develop and deliver planting and establishment programmes on B&NES land.	B&NES Officer	0.5 FTE  External Funding from Trees for Climate fund  Council land	5 Yr plan: 5.1 LCA actions: 11.1 f, g, h. 13.1 c, d, h	1000 trees planted
1b	Develop and deliver street tree planting and establishment programmes.	B&NES Officer	0.5 FTE  External funding from Trees for Climate fund	5 Yr plan: 5.1 LCA actions: 11.1 f, g, h. 13.1 c, d, h	250 street trees planted
1c	Tree sponsorship scheme live.	B&NES Tree and Woodland Officer	0.2 FTE	5 Yr plan: 3.1, 8.1, 8.2,	Plant & adopt 100 trees
1d	Continue development of external tree planting project - One Tree per Child	B&NES Tree & Woodland Officer + appointment of Tree Planting Programme Officer Schools	1 FTE  B&NES internal funding @ 28k p/a  External funding via project grants from the Tree Council/WT @ 6k +	5 Yr Plan: 1.2, 3.1, 5.4, 8.2 LCA actions: 13.1g	No. of children engaged, and trees planted – 2000 estimated

B&NES Tree and Woodland Delivery Plan – Main Report

Item	Action	Lead	Resources	FoA Plan Contribution	Measure of success (end of 03/23)
			Additional external funding via Replant B&NES fund (approx. £8,000 estimated)		
1e	Roll out External tree planting project - Queens Green Canopy	B&NES Tree & Woodland Officer + appointment of Tree Planting Programme Office. Schools or Town and Parish Councils	In 1d resource above	5 Yr Plan: 1.2, 3.1, 5.4, 8.2 LCA actions: 13.1g	Residues of trees from the 100 in yr 21/22
1f	Stimulate External tree planting projects - Curo	B&NES Tree & Woodland Officer, Curo	FoA Trees for Climate fund	5 Yr plan: 2.5,	500 trees (estimate)
1g	Tree Giveaway	B&NES Tree & Woodland Officer	0.2 FTE B&NES internal funding	5 Yr plan: 1.2, 3.1, 5.4	10000 trees
1h	Write action plan for 23-24	B&NES Tree & Woodland Officer	0.1 FTE		Action plan complete
<b>2 Rural Tree and Woodland Planting Delivery</b>					
2a	Develop and deliver planting and establishment programme on rural Council owned land. (Currently B&NES has no rural	B&NES Tree & Woodland Officer,	Corporate assistance requested to review land allocations. Explore corporate	5 Yr plan 7.1, 7.2	Land identified and within scheme of planting  Land purchased

B&NES Tree and Woodland Delivery Plan – Main Report

Item	Action	Lead	Resources	FoA Plan Contribution	Measure of success (end of 03/23)
	land immediately available to plant as its held for specific purposes that may not be deliverable).		willingness to purchase land if necessary  Officer time		
2b	Stimulate, develop and roll out External tree planting projects via a ‘call for sites’ with FoA	B&NES Tree & Woodland Officer	Within existing Officer Time	5 Yr plan 2.5, 7.1, 7.2,	Call for sites
2c	Working with FoA, identify Rural Tree Planting partnership projects where B&NES can assist with delivery (set up planting website, forums etc)	B&NES Tree & Woodland Officer,	0.1 FTE	5 Yr plan 2.5, 4.1, 5.1, 5.6 7.2	That a growing no. of external projects/partners are stimulated year on year
2d	Working with FoA and Parish Councils, develop a Parish Plant a Hectare Project – potential project	B&NES Tree & Woodland Officer working with FoA	Officer time – plus 0.5fte project officer post over 18months?	5 Yr plan: 2.5, 3.1, 4.1, 5.1, 5.6	Project designed, Parish expression of interest undertaken, costed, approved and officer appointed
<b>3 Tree Supply - actions in yr 22-23</b>					
3a	Engage and assist with groups to create community tree nursery projects where appropriate and cost effective and/or value added (training, volunteering, therapeutic outcomes). Explore whether this could be upscaled to the FoA regional level.	B&NES Tree & Woodland Officer working with FoA	Existing officer time	5 Yr Plan: 3.3	Third parties are engaged re tangible model for delivery

## B&amp;NES Tree and Woodland Delivery Plan – Main Report

Item	Action	Lead	Resources	FoA Plan Contribution	Measure of success (end of 03/23)
3b	Investigate the feasibility of developing a B&NES “Ourboretum” community tree growing project.	B&NES Tree & Woodland Officer	Existing officer time	5 Yr Plan: 3.3	Third parties are engaged re tangible model for delivery
<b>4 Engagement, Promotion and Delivering Right Tree, Right Place, for the Right Reasons</b>					
4a	Administer and promote a B&NES Virtual Forest Interactive Map (with FoA)	B&NES Officer time, other Council teams (GIS/ time, FoA, Consultancy time	Officer time  Financial costs from delivery plan	5 Yr plan 6.2	That mapping is promoted well, and it captures details of as many trees planted in B&NES as possible
4b	Set up, administer, and promote a Tree planting donation scheme (voluntary funding)	Tree and Woodland Officer/FoA	Existing Officer time	5 Yr plan 8.1, 8.2	‘Replant B&NES’ page receiving 8k p/a
4c	Manage and promote the B&NES Woodland Opportunity Mapping and Guidance	Planning Policy Team, Landscape Officer, Tree & Woodland Officer, FoA.	Existing Officer time	5 Yr plan 2.2	On-line mapping active and guidance available to the public
4d	Review and update tree and woodland related planning policy and guidance for new Local Plan	Planning Policy – Landscape Officer	Existing officer time	5 Yr plan 2.2	Updated policies and evidence base completed for new Local Plan



## B&amp;NES Tree and Woodland Delivery Plan – Main Report

Item	Action	Lead	Resources	FoA Plan Contribution	Measure of success (end of 03/23)
4e	Investigate setting up and delivering a B&NES Rural Tree Planting Forum (with FoA).	Tree and Woodland Officer/FoA	Existing officer time	5 Yr plan 2.5, 4.1, 5.3, 5.6	That a growing no. of external projects/partners are stimulated year on year
4f	Use the communications and engagement strategy to engage both communities, and internally within B&NES.	B&NES Tree and Woodland Officer + others	0.2 FTE	5 Yr plan: 1.2	T&W website set up and active social media campaign in place and traffic monitored
<b>5 Contributing to relevant FoA Plan aspirations, liaison with FoA officers</b>					
5a	Formally adopt or endorse the Forest of Avon Plan: A Tree and Woodland Strategy for the West of England	B&NES	Existing officer time	5 Yr plan: 1.1	Formal adoption of the Forest of Avon Plan.
5b	Contribute to the FoA Plan as set out in its Action Plans for Local Authority input	B&NES Tree and woodland Officer, B&NES Landscape Officer (Planning Policy), others as required	Officer time on-going	5 Yr plan: 1.2, 2.2, 2.5, 3.1, 3.3, 3.5, 4.1, 6.1, 6.2, 6.3, 6.4, 7.1	Contributions to FoA plan – on-going includes referencing actions to FoA plan and attendance at WoE T&W Strategy Group Meetings

## 7.4 Actions Plan for Years 3 – 5

During the second half of the 2022/2023 plan period, we will review the previous 18 months and prepare for years 3-5 as the next phase of plan, in consultation with the officer working group and key partners (FoA +). Years 3-5 begins a new phase beyond the 100,000 trees planted target and looks to:

- continuing on-going programmes and projects as well as
- developing programmes and projects which combine our contribution to WENP and FoA Plan targets with our work on nature recovery and the ecological emergency.

## 8.0 Monitoring Progress

Monitoring of the action plan (and therefore achievement of the objectives), is essential to the successful delivery of the plan.

The following broad areas will be monitored:

- Tree and woodland canopy cover and its corresponding carbon value, on a 3 yearly basis to accord with the updating of the APGB canopy cover mapping.
- Numbers of individual trees and hectareage of woodland/tree groups planted annually in B&NES using council data, other parties' data (with permission), and through data inputted into the B&NES Virtual Forest Map (set out within the Action Plan) on an annual basis.
- Nature-based solutions achieved through planting to include carbon capture (through i-Tree Canopy and i-Tree Eco).
- B&NES contribution to the FoA Plan targets.
- BANES expenditure to deliver the action plan.

Further information regarding monitoring is provided in Appendix 3.